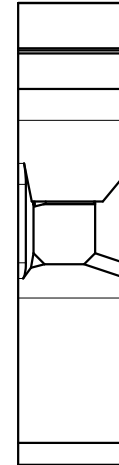
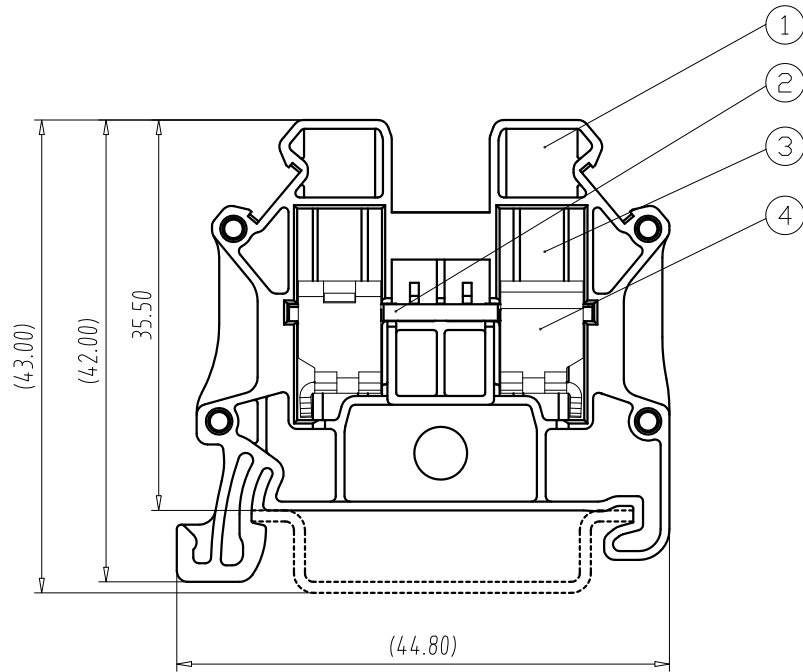
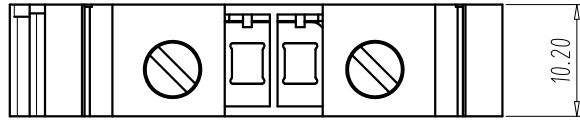


FILE: TK\TK10-T(XS)

| REV | E.C.N NO. | CONTENT | CHK | DATE |
|------|-----------|--------------------|-----|------------|
| V0.1 | | Update the drawing | ZY | 2022.11.17 |



NOTES:

1. IEC:
 - Rating:1000V, 57A;
 - Rate Impulse Voltage:8000V;
 - Insulation Resistance:500MΩ or more at DC500V;
 - Contact Resistance: ≤5mΩ;
 - Material Group: I;
 - Pollution Degree:3;
 - Overvoltage Category:III;
 - Suitable Electric Wire:0.5mm²~10mm²&16mm² (SOL);
2. UL:
 - Rating:600V, 65A;
 - Insulation Withstands Voltage:AC2200V/MIN;
 - Suitable Electric Wire:20AWG~6AWG;
- 3.Using Temperature Range:-40℃~+115℃;
4. Screw Torque Value:1.2N • m;
- 5.Strip length:10.0~11.0mm;
6. RoHS compliance.

TK10-T(X S)

- Slot screw
- Color:
 - M19:Grey
 - L01:Blue
 - R03:Red
 - K:Black

| 4 | CAGE | 2 | STEEL | M4/Zn Plated |
|------|-----------------|------|--------------|--------------|
| 3 | SCREW | 2 | STEEL | M4/Zn Plated |
| 2 | CURRENT CARRIER | 1 | Copper Alloy | Tin Plated |
| 1 | HOUSING | 1 | PA66 | UL94 V-0 |
| ITEM | NAME OF PART | Q'TY | MATERIAL | NOTE |

| Total Pitch Tolerances in mm | | | | | | | | | | Nominal dimension range in mm | | | | | | | | | |
|------------------------------|---------|---------|---------|---------|----------|----------|----------|----------|----------|-------------------------------|---------|---------|---------|---------|----------|----------|----------|----------|----------|
| over 0 | over 30 | over 53 | over 70 | over 90 | over 115 | over 150 | over 200 | over 250 | over 300 | over 0 | over 30 | over 53 | over 70 | over 90 | over 115 | over 150 | over 200 | over 250 | over 320 |
| to 30 | to 53 | to 70 | to 90 | to 115 | to 150 | to 200 | to 250 | to 300 | to 320 | to 30 | to 53 | to 70 | to 90 | to 115 | to 150 | to 200 | to 250 | to 320 | |
| ±0.20 | ±0.25 | ±0.3 | ±0.35 | ±0.44 | ±0.55 | ±0.70 | ±0.85 | ±1.00 | | ±0.25 | ±0.30 | ±0.35 | ±0.44 | ±0.55 | ±0.70 | ±0.80 | ±0.90 | ±1.20 | |

| | | | | | | | |
|------|----|------|------------|--|--------------|----------|-----|
| DWG. | ZY | DATE | 2022.07.06 | UNITS | MM | SHEET/OF | 1/1 |
| CHK. | | DATE | | SCALE | 15 : 1 | A4 | |
| APP. | | DATE | | <div style="text-align: center;"> <p>TIANLI ELECTRICAL MACHINERY(NINGBO)CO.,LTD.</p> </div> | | | |
| | | | | | | | |
| | | | | DWGNO. | TLDW-TK10TXS | | |