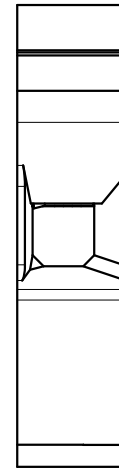
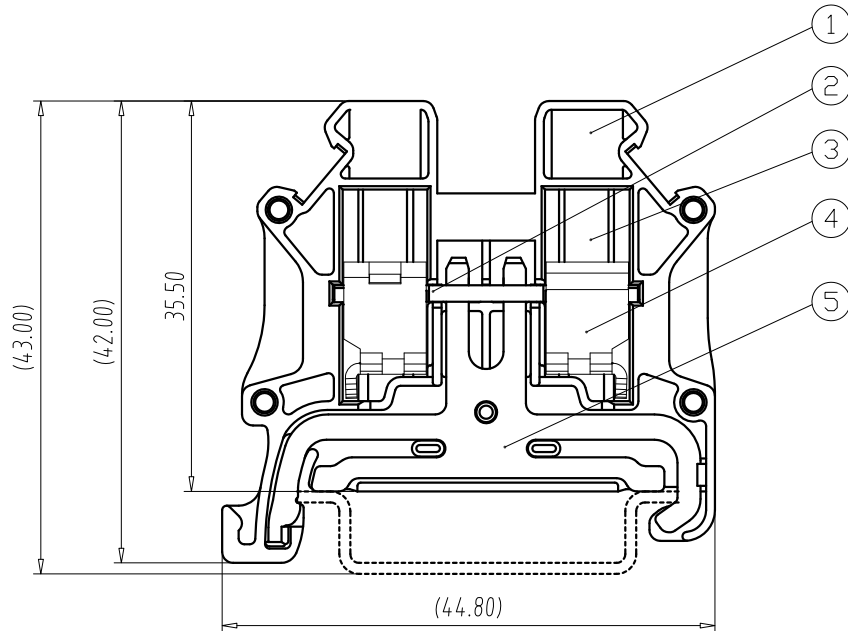
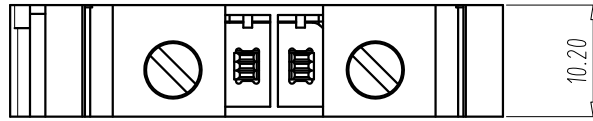


FILE: TK\TK10-T-PE(S)

REV	E.C.N NO.	CONTENT	CHK	DATE
V0.0		ORIGINAL	ZY	2022.07.06



NOTES:

1. IEC:

- Rating:1000V;
- Rate Impulse Voltage:8000V;
- Insulation Resistance:500MΩ or more at DC500V;
- Contact Resistance: ≤5mΩ;
- Material Group: I ;
- Pollution Degree:3;
- Overvoltage Category:III;
- Suitable Electric Wire:0.5mm<sup>2</sup>~10mm<sup>2</sup>&16mm<sup>2</sup> (SOL) ;

2. UL:

- Rating:600V;
- Insulation Withstands Voltage:AC2200V/MIN;
- Suitable Electric Wire:20AWG~6AWG;

3. Using Temperature Range:-40°C~+115°C;

4. Screw Torque Value:1.2N·m

5. Strip length:10.0~11.0mm;

6. RoHS compliance.

TK10-T-PE(S)

Slot screw

5	GROUNDING	3	Copper Alloy	Tin Plated
4	CAGE	2	STEEL	M4/Zn Plated
3	SCREW	2	STEEL	M4/Zn Plated
2	CURRENT CARRIER	1	Copper Alloy	Tin Plated
1	HOUSING	1	PA66	UL94 V-0
ITEM	NAME OF PART	Q'TY	MATERIAL	NOTE

Total Pitch Tolerances in mm								Nominal dimension range in mm									
over 0	over 30	over 53	over 70	over 90	over 115	over 150	over 200	over 250	over 300	over 30	over 53	over 70	over 90	over 115	over 150	over 200	over 250
to 30	to 53	to 70	to 90	to 115	to 150	to 200	to 250	to 320	to 30	to 53	to 70	to 90	to 115	to 150	to 200	to 250	to 320
±0.20	±0.25	±0.3	±0.35	±0.44	±0.55	±0.70	±0.85	±1.00	±0.25	±0.30	±0.35	±0.44	±0.55	±0.70	±0.80	±0.90	±1.20

DWG.	ZY	DATE	2022.07.06	UNITS	MM	SHEET/OF	1/1
CHK.		DATE		SCALE	15 : 1	A4	
APP.		DATE		NAME	TK10-T-PE(S)		
 TIANLI ELECTRICAL MACHINERY(NINGBO)CO.,LTD.				DWGNO.	TLDW-TK10TPES		