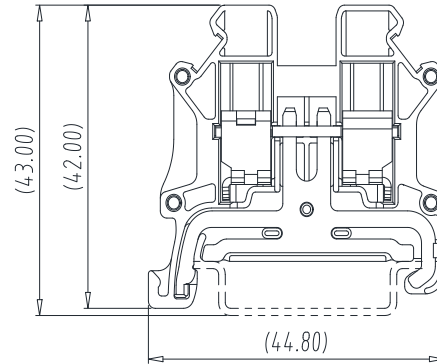
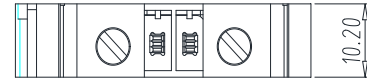
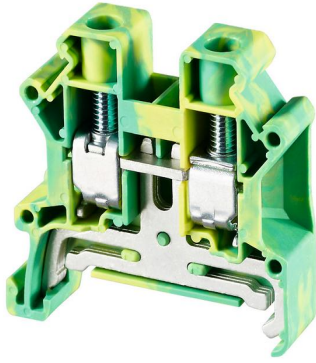


Rail Mounted Terminal Block — TK series — TK10-T-PE



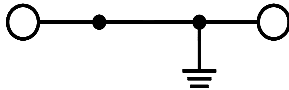
■ 图示(Pic. shown) : TK10-T-PE(S)

General:
Rail Mounted terminal block
Screw clamp unit: M4,1.2N·m
Mounting type: DIN Rail TH35-7.5

认证 (Approval) :



■ 电路图(Circuit diagram)



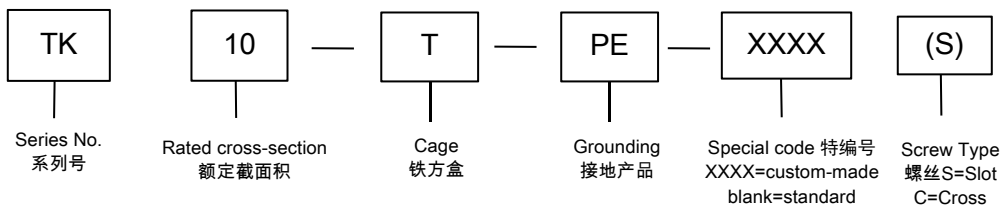
■ 尺寸(Dimensions)

长度(Length)	44.80mm
宽度(Width)	10.20mm
安装高度(Height TH35-7.5)	43.00mm

■ 技术参数Technical Data

UL应用组别(UL Application group) IEC过电压别/污染等级(IEC overvoltage category /pollution degree)	UL standard			IEC standard		
	UL Application group			IEC过电压别/污染等级(IEC overvoltage category /pollution degree)		
	B	C	D	III / 3	III / 2	II / 2
额定电压(Rated voltage)	600	600	600	1000	--	--
额定电流(Rated current)	--	--	--	--	--	--
额定连接容量(Rated connection capacity)	20 ~ 6AWG			0.5 ~ 10mm ² & 16mm ² (sol)		
刚性导线横截面 (AWG) (Conductor cross section,solid)				20 ~ 6		
柔性导线横截面 (AWG) (Conductor cross section,stranded)				20 ~ 6		
刚性导线横截面 (mm ²) (Conductor cross section,rigid)				0.5 ~ 16		
柔性导线横截面 (mm ²) (Conductor cross section,flexible)				0.5 ~ 10		
具有相同横截面的2根实心导线 (mm ²) (2 conductors with cross section,solid)				0.5 ~ 4		
具有相同横截面的2根柔性导线 (mm ²) (2 conductors with cross section,flexible)				0.5 ~ 4		
柔性导线横截面, 不带绝缘套管的冷压头 (mm ²)				0.5 ~ 10		
柔性导线横截面, 带绝缘套管的冷压头 (mm ²)				0.5 ~ 10		
2根具有相同横截面的导线, 柔性, 带TWIN套管及塑料套管 (mm ²)				0.5 ~ 6		
适用导轨(Suitable rail)				TH35		
绝缘材料(Insulation Material)				PA66 UL94 V-0		
绝缘材料组别(Material group)				I		
电流承载部件材料和镀层(Material & Plating of Current carrier)				Copper alloy , Tin plated		
接线螺丝(Wire clamp unit Screw), 最大扭矩(torque Max.)				M4, 1.2N·m		
耐电压(1分钟)(Withstanding Voltage/1Min)				2200V		
额定冲击电压(Rated surge voltage)				8KV		
剥线长度(Wire stripping length)				10 ~ 11mm		
使用温度(Operating temperature)				-40°C up to +115°C		
存储温度(Storage temperature)				-40°C up to +70°C		
存储相对湿度(Storage relative humidity)				≤70%		

订购方式(How to order)

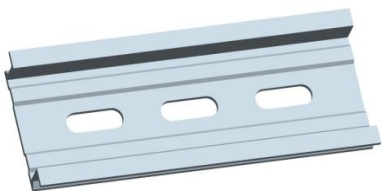


Rail Terminal Block — TK series — TK10-T-PE —Accessories

安装导轨 DIN Rail



P/N:TH35-7.5-ST



P/N:TH35-7.5-AL

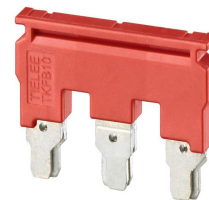
盖板 Cover P/N: TKC10-T



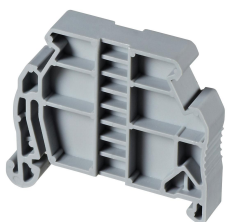
标示牌 Marking label P/N: MARK10DB-M



桥接件 Plug-in bridge P/N: TKFB10-XXP



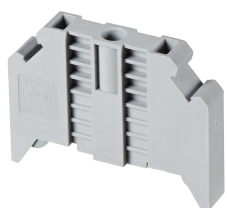
终端固定器 End clamp



P/N: ETNS01



P/N: ETNS03



P/N: ETNS02