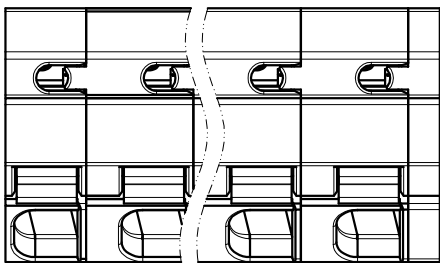
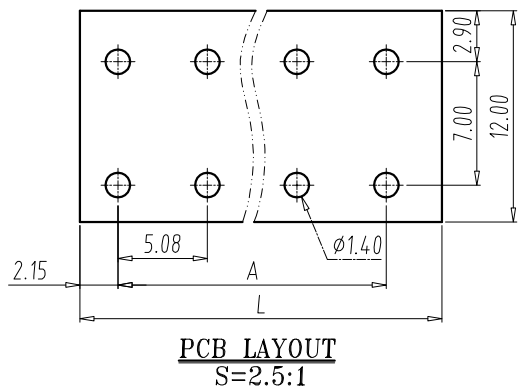


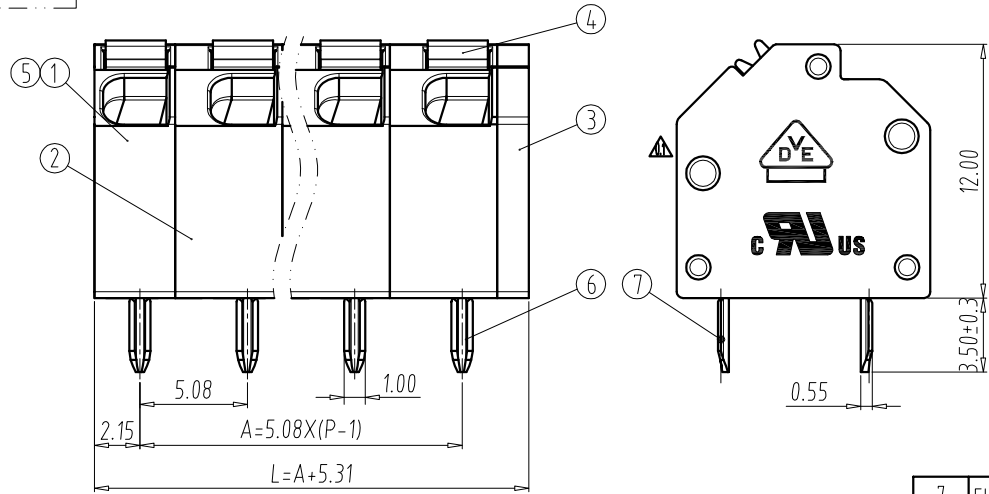
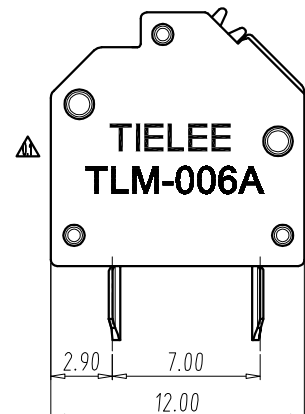
FILE: TLM\006\TLM-006A-5.08-XXP-X

REV	E.C.N NO.	CONTENT	CHK	DATE
V0.1		Update the drawing	YHZ	2021.10.30



NOTES:

- UL:
Rating:300V, 10A;
Insulation Withstands Voltage:AC1600V/MIN;
Suitable Electric Wire:26~16AWG
- IEC:
Rating:320V, 17.5A;
Rate Impulse Voltage:4000V;
Insulation Resistance:500MΩ or more at DC500V;
Contact Resistance: ≤5mΩ
Material Group:I;
Pollution Degree:2;
Overvoltage Category:III;
Suitable Electric Wire:0.2~1.5mm²
- Using Temperature Range:-40°C~+115°C;
- Strip length:9.0~10.0mm
- RoHS compliance;



DIM	P	2	3	4	5	6	7	8	9	10	11	12
L		10.39	15.47	20.55	25.63	30.71	35.79	40.87	45.95	51.03	56.11	61.19
A		5.08	10.16	15.24	20.32	25.4	30.48	35.56	40.64	45.72	50.8	55.88

DIM	P	13	14	15	16	17	18	19	20	21	22	23	24
L		66.27	71.35	76.43	81.51	86.59	91.67	96.75	101.83	106.91	111.99	117.07	122.15
A		60.96	66.04	71.12	76.2	81.28	86.36	91.44	96.52	101.6	106.68	111.76	116.84

Total Pitch Tolerances in mm										Nominal dimension range in mm									
over	over	over	over	over	over	over	over	over	over	over	over	over	over	over	over	over	over	over	over
0	30	53	70	90	115	150	200	250	320	0	30	53	70	90	115	150	200	250	320
to	to	to	to	to	to	to	to	to	to	to	to	to	to	to	to	to	to	to	to
30	53	70	90	115	150	200	250	320	30	53	70	90	115	150	200	250	320	320	320
±0.20	±0.25	±0.30	±0.35	±0.44	±0.55	±0.70	±0.85	±1.00	±1.20	±0.25	±0.30	±0.35	±0.44	±0.55	±0.70	±0.80	±0.90	±1.20	±1.20

ITEM	NAME OF PART	Q'TY	MATERIAL	NOTE
7	FIXED PIN	P	Copper Alloy	Tin PLATED
6	SOLDER PIN	P	H-Copper Alloy	Tin PLATED
5	SPRING	P	Stainless	/
4	LEVER	P	PA66	UL94 V-0
3	COVER	1	PA66	UL94 V-0
2	Middle Housing	P-1	PA66	UL94 V-0
1	Start Housing	1	PA66	UL94 V-0

DWG.	YHZ	DATE	2020.08.25	UNITS	MM	SHEET/OF	1/1
CHK.		DATE		SCALE	3 : 1	A4	
APP.		DATE		NAME	TLM-006A-5.08-XXP-X		
 ELECTRICAL MACHINERY(NINGBO)CO.,LTD.				DWGNO.	TLDW-TLM006A5.08XXPX		