

REV	E.C.N NO.	CONTENT	CHK	DATE
V0.1	S2308013	Add VDE logo,change the Plated	YJ	2023.08.26

NOTES:

1. UL:

Rating:600V, 55A;
 Insulation Withstands Voltage:AC2200V/1MIN;
 Suitable Electric Wire:20AWG~6AWG

2. IEC:

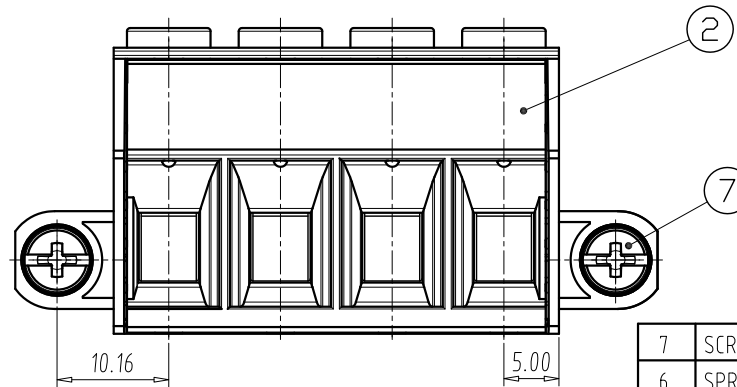
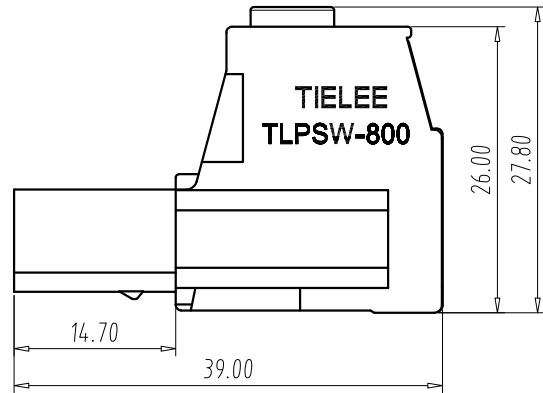
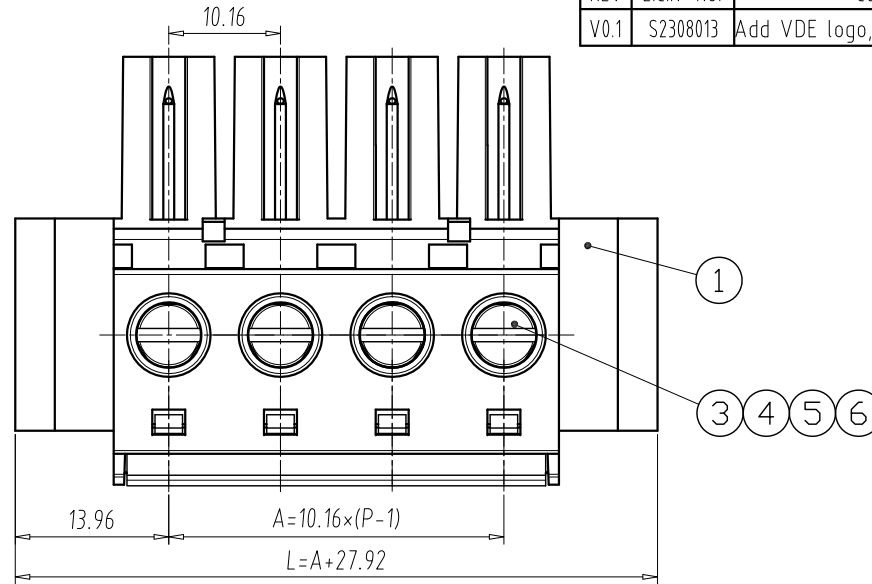
Rating:1000V, 76A;
 Rate Impulse Voltage:6000V;
 Insulation Resistance:500MΩ or more at DC500V;
 Contact Resistance: ≤5mΩ
 Material Group: I;
 Pollution Degree:2;
 Overvoltage Category: II;
 Suitable Electric Wire:0.5mm²~16mm²

3. Using Temperature Range:-40℃~+115℃;

4. Screw Torque Value: (M4) 1.8N·m

5. Strip length:13~14mm

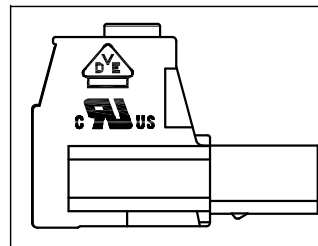
6. RoHS compliance;



7	SCREW-2	2	STEEL	M3/Zn Plated
6	SPRING	P	STAINLESS	/
5	CLAMP	P	COPPER ALLOY	Ag Plated
4	BLOCK	P	BRASS	Ni Plated
3	SCREW-1	P	STEEL	M4/Zn Plated
2	COVER	1	PA66	UL94 V-0
1	HOUSING	1	PA66	UL94 V-0
ITEM	NAME OF PART	Q'TY	MATERIAL	NOTE

DIM	P	2	3	4	5	6	7	8	9	10
L		38.08	48.24	58.4	68.56	78.72	88.88	99.04	109.2	119.36
A		10.16	20.32	30.48	40.64	50.8	60.96	71.12	81.28	91.44

Total Pitch Tolerances in mm										Nominal dimension range in mm									
over	over	over	over	over	over	over	over	over	over	over	over	over	over	over	over	over	over	over	over
0	30	53	70	90	115	150	200	250	300	0	30	53	70	90	115	150	200	250	320
±0.20	±0.25	±0.3	±0.35	±0.44	±0.55	±0.70	±0.85	±1.00	±0.25	±0.30	±0.35	±0.44	±0.55	±0.70	±0.80	±0.90	±1.20		



DWG.	SK	DATE	2021.06.03	UNITS	MM	SHEET/OF	1/1
CHK.		DATE		SCALE	15 : 1	A4	
APP.		DATE		NAME TLPSW-800V-XXP-XS			
 TIANLI ELECTRICAL MACHINERY(NINGBO)CO.,LTD.				DWGNO.	TLDW-TLPSW800VXXPXS		