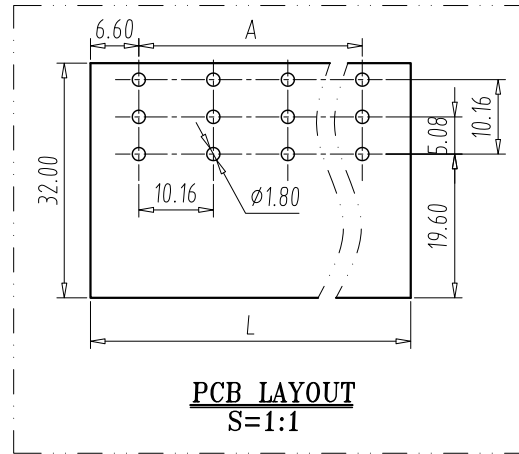
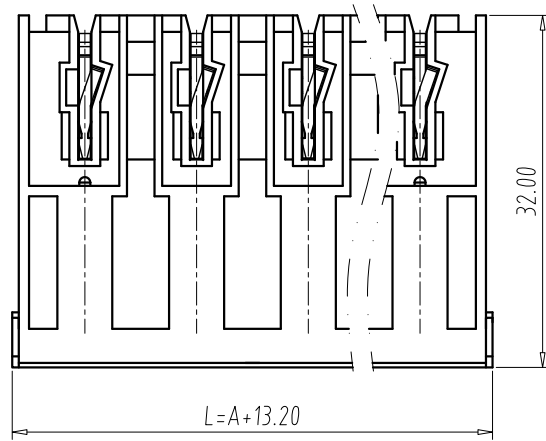
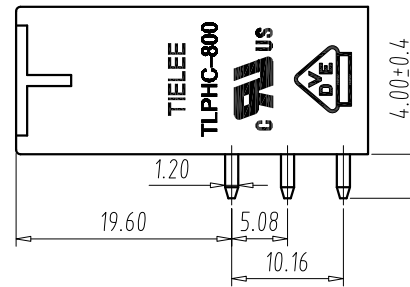
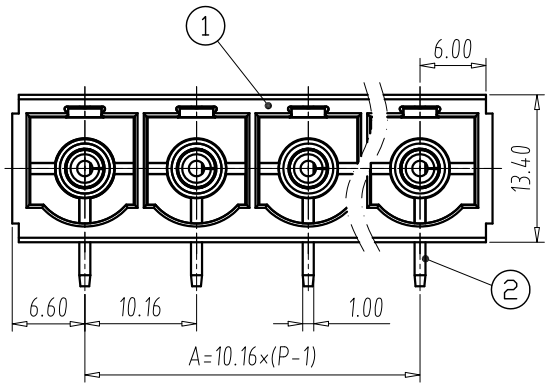


REV	E.C.N NO.	CONTENT	CHK	DATE
V0.1	S2308013	Add VDE logo,change the Plated	YJ	2023.08.26



NOTES:

- UL:
  - Rating:300V, 55A (B, C) ; 600V (D)
  - Insulation Withstands Voltage:AC2200V/1MIN;
- IEC:
  - Rating:1000V, 76A;
  - Rate Impulse Voltage:6000V;
  - Insulation Resistance:500M $\Omega$  or more at DC500V;
  - Contact Resistance:  $\leq 5m\Omega$
  - Material Group: I ;
  - Pollution Degree:2;
  - Overvoltage Category: II ;
- Using Temperature Range:-40 $^{\circ}C \sim +115^{\circ}C$ ;
- RoHS compliance;



DIM	P	02	03	04	05	06	07	08	09	10	11
L		23.36	33.52	43.68	53.84	64	74.16	84.32	94.48	104.64	114.8
A		10.16	20.32	30.48	40.64	50.8	60.96	71.12	81.28	91.44	101.6

Total Pitch Tolerances in mm											Nominal dimension range in mm											
over	over	over	over	over	over	over	over	over	over	over	over	over	over	over	over	over	over	over	over	over	over	
0	30	53	70	90	115	150	200	250	300	320	0	30	53	70	90	115	150	200	250	320	320	
to	to	to	to	to	to	to	to	to	to	to	to	to	to	to	to	to	to	to	to	to	to	
30	53	70	90	115	150	200	250	320	320	320	30	53	70	90	115	150	200	250	320	320	320	
±0.20	±0.25	±0.3	±0.35	±0.44	±0.55	±0.70	±0.85	±1.00	±0.25	±0.30	±0.35	±0.44	±0.55	±0.70	±0.80	±0.90	±1.20					

2	SOLDER PIN	P	COPPER ALLOY	Ag Plated
1	HOUSING	1	PA66	UL94 V-0
ITEM	NAME OF PART	Q'TY	MATERIAL	NOTE

DWG.	SK	DATE	2021.06.03	UNITS	MM	SHEET/OF	1/1
CHK.		DATE		SCALE	15 : 1	A4	
APP.		DATE		NAME: TLPHC-800R-XXP-X DWGNO: TLDW-TLPHC800RXXPX			
TIANLI ELECTRICAL MACHINERY(NINGBO)CO.,LTD.							